

IR300-180 WL300-180

Adjustable IR: Up to 180°



IR300-180

Illuminate distances up to 122m / 400ft at 180°! Videolarm's new IR300-180 Infrared Illuminator not only provides you with a powerful projection, but its beam angle can also be adjusted to capture additional areas from 10° to 180°. With an additional IR you can capture a true 360° coverage. Constructed out of a rugged, vandal-resistant casing, the IR300-180 is ideal for night time covert surveillance. Incorporating state-of-the-art LED technology, the IR300-180 is backed by Videolarm's impressive 5 year warranty.

WL300-180

Illuminate the night with Videolarm's new WL300-180 White Light LED Kit. Incorporating advanced LED technology, the WL300-180 is capable of projecting a brilliant light source up to 34m / 112ft at 180°. As an added benefit, each light kit is capable of adjusting its beam angle up to 180°, or up to 360° with two WL300-180's.

The WL300-180 comes standard with mounting brackets and power supply, and is designed to withstand vandalistic attacks.

KEY FEATURES

- **Illuminate distances up to 122m / 400ft at 180°**
- **Adjustable beam angle - 10° up to 180° (360° with two light units)**
- **Rugged, vandal-resistant design**
- **Compact design; ideal for pole mounted applications. P1800**
- **Incorporates advanced LED technology - 850 nanometers**
- **Industry leading 5 year warranty**

- **Powerful white LED light kit to illuminate up to 34m / 112ft at 180°**
- **Adjustable beam angle - 10° up to 180° (360° with two light units)**
- **Rugged, vandal-resistant design**
- **Save from energy efficient LED technology over traditional bulb illuminators**
- **High definition lighting allows cameras to capture crystal clear images.**
- **Compact design; ideal for pole mounted applications**
- **Industry leading 5 year warranty**



Infrared Illuminators



Adjustable IR Illuminator:

IR300-180: 850nm IR Illuminator, 10-180° adjustable angle, up to 400ft at 180°. Includes 110/220vac power supply



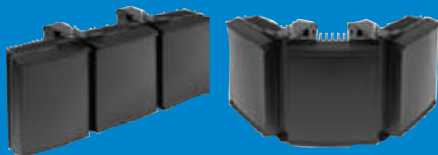
Adjustable White Light:

WL300-180: White Light Illuminator, 10-180° adjustable angle, up to 112ft at 180°. Includes 110/220vac power supply

Adjustable Illuminators

IR300-180

ULTIMATE ADAPTIVE ILLUMINATION™:



Narrow Angle

Wide Angle

WL300-180

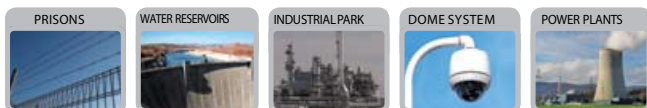
ULTIMATE ADAPTIVE ILLUMINATION™:



Narrow Angle

Wide Angle

APPLICATIONS



Prisons

Water Reservoirs

Industrial Park

Dome System

Power Plants

IR300-180

Mechanical Specifications

ILLUMINATOR

| | |
|-----------------------|--|
| Max Distance: | up to 3700m (1,214ft) |
| Angle: | Various - See Part Codes |
| Optics: | SMT LED's |
| Consumption: | 120W max |
| Voltage: | 13.5V current controlled |
| Weight: | 6kg |
| Environmental: | IP66 |
| Temp Range: | -50 to +50°C (-58 to 122°F) |
| Cable Length: | 2.5m |
| Colour: | Black |
| Wavelength: | 850 or 950nm |
| Dimensions: | 420 x 195 x 66mm 16" x 8" x 3" approx |

Power Supply

| | |
|---------------------|--|
| Input: | Universal 100-240V AC auto-sensing |
| Output: | 120W max |
| Temperature: | -50 to +50°C (-58 to 122°F) |
| Weight: | 2.4Kg |
| Dimensions: | 240mm x 160mm x 81mm 9" x 6" x 3" approx |

WL300-180

Mechanical Specifications

ILLUMINATOR

| | |
|-----------------------|--|
| Max Distance: | up to 150m (492ft) |
| Angle: | Various |
| Optics: | SMT LED's |
| Consumption: | 120W max |
| Weight: | 6kg |
| Environmental: | IP66 |
| Temp Range: | -50 to +50°C (-58 to 122°F) |
| Cable Length: | 2.5m |
| Colour: | Silver |
| Wavelength: | White-Light |
| Dimensions: | 420 x 195 x 66mm 16" x 8" x 3" approx |

Power Supply

| | |
|---------------------|--|
| Input: | Universal 100-240V AC auto-sensing |
| Output: | 120W max |
| Temperature: | -50 to +50°C (-58 to 122°F) |
| Weight: | 2.4Kg |
| Dimensions: | 240mm x 160mm x 81mm 9" x 6" x 3" approx |

